

For flange couplings standardized flanges are used complying with EN or ASTM. The flange coupling can be swivel or fixed. A flange-to-hose connection should preferably be fitted with at least one swivel flange. During assembly, the connection with the fixed flange is fitted to the pipe system first, followed by the swivel flange.

The swivel flange prevents twisting of the hose during assembly.

For flange couplings, flanges complying with EN 1092-1 and ASTM A 182 ANSI B16.5 are used. Always connect flanges of the same standard or ASTM and pressure range. Due to difference in overall dimensions ASTM and EN flanges can not be connected.

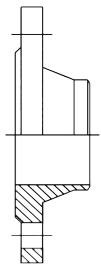
In the next table you'll find an overview of flange types with their corresponding pressure classes.





FLANGE TYPES

WELDING NECK FLANGE EN 1092-1 / Type 11



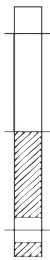
- PN 6 = DIN2631
- PN 10 = DIN2632
- PN 16 = DIN2633
- PN 25 = DIN2634
- PN 40 = DIN2635

THREADED FLANGE EN 1092-1 / Type 13



- PN 10/16 = DIN2566

BLIND FLANGE EN 1092-1 / Type 5



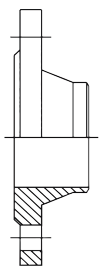
- PN 10/16 = DIN2527

SLIP-ON FLANGE EN 1092-1 / Type 4



- PN 6 = DIN2641
- PN 10 = DIN2642
- PN 25 = DIN2655
- PN 40 = DIN2656

WELDING NECK FLANGE ASTM



- RF 150 lbs
- RF 300 lbs
- RF 600 lbs

THREADED FLANGE ASTM



- RF 150 lbs

BLIND FLANGE ASTM



- RF 150 lbs
- RF 300 lbs
- RF 600 lbs

LAP-JOINT FLANGE ASTM



- RF 150 lbs
- RF 300 lbs

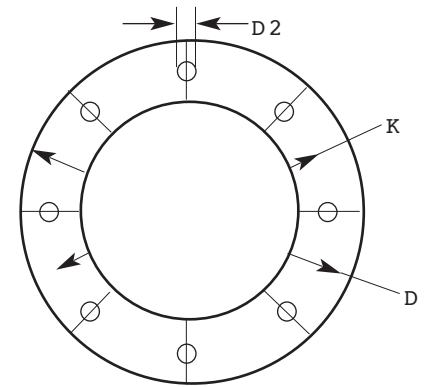


FLANGE DIMENSIONS



EN-DIN PN 6					
"	ND	D	K	N	D2
1/2"	15	80	55	4	11
3/4"	20	90	65	4	11
1"	25	100	75	4	11
1.1/4"	32	120	90	4	14
1.1/2"	40	130	100	4	14
2"	50	140	110	4	14
2.1/2"	65	160	130	4	14
3"	80	190	150	4	18
4"	100	210	170	4	18
5"	125	240	200	8	18
6"	150	265	225	8	18
8"	200	320	280	8	18
10"	250	375	335	12	18
12"	300	440	395	12	22

EN-DIN PN 10				
ND	D	K	N	D2
15	95	65	4	14
20	105	75	4	14
25	115	85	4	14
32	140	100	4	18
40	150	110	4	18
50	165	125	4	18
65	185	145	4/8	18
80	200	160	8	18
100	220	180	8	18
125	250	210	8	18
150	285	240	8	22
200	340	295	8	22
250	395	350	12	22
300	445	400	12	22



N= number of bolts

EN-DIN PN 16					
"	ND	D	K	N	D2
1/2"	15	95	65	4	14
3/4"	20	105	75	4	14
1"	25	115	85	4	14
1.1/4"	32	140	100	4	18
1.1/2"	40	150	110	4	18
2"	50	165	125	4	18
2.1/2"	65	185	145	4	18
3"	80	200	160	8	18
4"	100	220	180	8	18
5"	125	250	210	8	18
6"	150	285	240	8	22
8"	200	340	295	12	22
10"	250	405	355	12	26
12"	300	460	410	12	26

EN-DIN PN 25				
ND	D	K	N	D2
15	95	65	4	14
20	105	75	4	14
25	115	85	4	14
32	140	100	4	18
40	150	110	4	18
50	165	125	4	18
65	185	145	8	18
80	200	160	8	18
100	235	190	8	22
125	270	220	8	26
150	300	250	8	26
200	360	310	12	26
250	425	370	12	30
300	485	430	16	30

EN-DIN PN 40				
ND	D	K	N	D2
15	95	65	4	14
20	105	75	4	14
25	115	85	4	14
32	140	100	4	18
40	150	110	4	18
50	165	125	4	18
65	185	145	8	18
80	200	160	8	18
100	235	190	8	22
125	270	220	8	26
150	300	250	8	26
200	375	320	12	30
250	450	385	12	33
300	515	450	16	33

ASTM 150 lbs				
"	D	K	N	D2
1/2"	88.9	60.3	4	15.9
3/4"	98.4	69.8	4	15.9
1"	107.9	79.4	4	15.9
1.1/4"	117.5	88.9	4	15.9
1.1/2"	127.0	98.4	4	15.9
2"	152.4	120.6	4	19.0
2.1/2"	177.8	139.7	4	19.0
3"	190.5	152.4	4	19.0
4"	228.6	190.5	8	19.0
5"	254.0	215.9	8	22.2
6"	279.4	241.3	8	22.2
8"	342.9	298.4	8	22.2
10"	406.4	361.9	12	25.4
12"	482.6	431.8	12	25.4

ASTM 300 lbs				
"	D	K	N	D2
1/2"	95.2	66.7	4	15.9
3/4"	117.5	82.5	4	19.1
1"	123.8	88.9	4	19.1
1.1/4"	133.3	98.4	4	19.1
1.1/2"	155.6	114.3	4	22.2
2"	165.1	127.0	8	19.1
2.1/2"	190.5	149.2	8	22.2
3"	209.5	168.3	8	22.2
4"	254.0	200.0	8	22.2
5"	279.4	234.9	8	22.2
6"	317.5	269.9	12	22.2
8"	381.0	330.2	12	25.4
10"	444.5	387.3	16	28.6
12"	520.7	450.8	16	31.7

ASTM 600 lbs				
"	D	K	N	D2
1/2"	95.2	66.7	4	15.9
3/4"	117.5	82.5	4	19.1
1"	123.8	88.9	4	19.1
1.1/4"	133.3	98.4	4	19.1
1.1/2"	155.6	114.3	4	22.2
2"	165.1	127.0	8	19.1
2.1/2"	190.5	149.2	8	22.2
3"	209.5	168.3	8	22.2
4"	273.0	184.1	8	25.4
5"	330.2	266.7	8	28.6
6"	355.6	292.1	12	28.6
8"	419.1	349.2	12	31.7
10"	508.0	431.8	16	34.9
12"	558.8	488.9	20	34.9

