

STANDARD

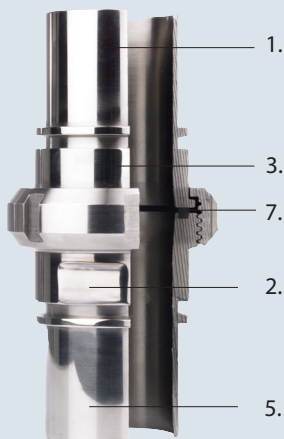
SMS 1145 (Swedish Manufacturing Standard) food couplings are used in the food, chemical and pharmaceutical industries.

OPERATION

SMS 1145 food couplings are connected in the same way as DIN 11851-compliant food couplings. The nut is slid across the head of the female coupling and onto the male coupling. The flat face of the female coupling is brought into contact with the turned-up seal of the male coupling. The nut is then tightened by hand or using a wrench.

LMC-Couplings offer male and female SMS 1145 food couplings with smooth or serrated hose shank. The smooth hose shank with collar is designed in accordance with EN 14420-2 / DIN2817 for assembly using RK and RKP safety clamps or FLEXOLINE® safety clamps. Where a serrated hose shank assembly is required, HRRK swage ferrules are recommended.

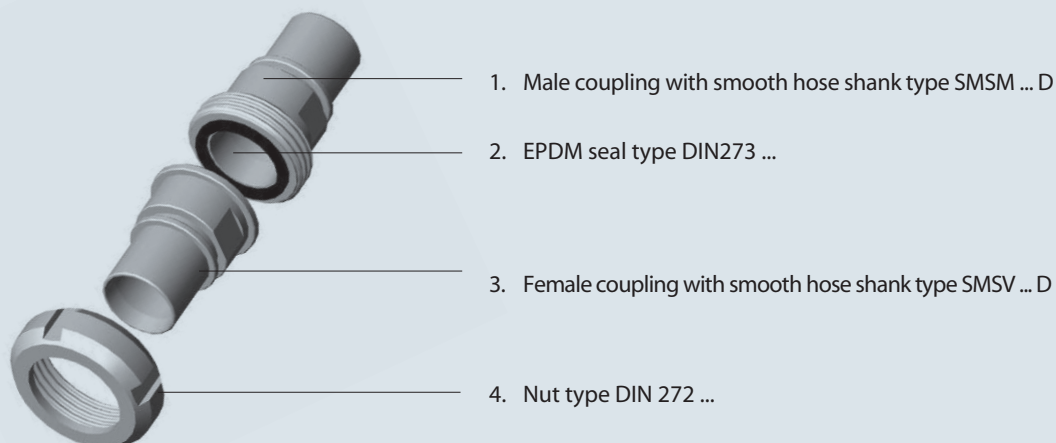
FEATURES



1. Electro-polished external surface for improved hygiene
2. Additional wrench surface to prevent twisting of the hose when fitting one half of the coupling to the other half
3. Extra-long head for easy assembly and disassembly + heat number + size
4. Low Ra-value of inner surface up to $\leq 1.6 \mu\text{m}$
5. Hose shank for assembly with RK and RKP safety clamps, FLEXOLINE® safety clamps or HRRK or HRP swage ferrules
6. Easy assembly of a rubber protection ring
7. Standard EPDM seal, conforming FDA directive



CONNECTION



Food couplings SMS 1145 vs DIN 11851

	SMS 1145	DIN 11851
Female coupling	Flat face	Conical face
Male coupling	Turned-up seal	Deep seal
Seal	Square seal	U-shape seal
Male and female thread	Rounded thread	Rounded thread
	complying with DIN 405/1	complying with DIN 405/1
Max. working pressure	6 bar / 87 psi	40 bar / 580 psi

SMS 1145

DIN 11851



APPLICATION

For the food (beverage, pharmaceutical and chemical) industrie(s).

WORKING PRESSURE

6 bar / 87 psi

TEMPERATURE

-40°C / -40°F up to 145°C / 293°F

Hose, coupling, assembly method and seal must be chosen in relation with the disired temperature and working pressure.

MATERIAL

- Coupling
Stainless steel AISI 316 - 1.4401 = hose shank coupling (standard)
Stainless steel AISI 304 - 1.4301 = nut and cap (standard)
- Seal
EPDM
NBR, FPM on request available

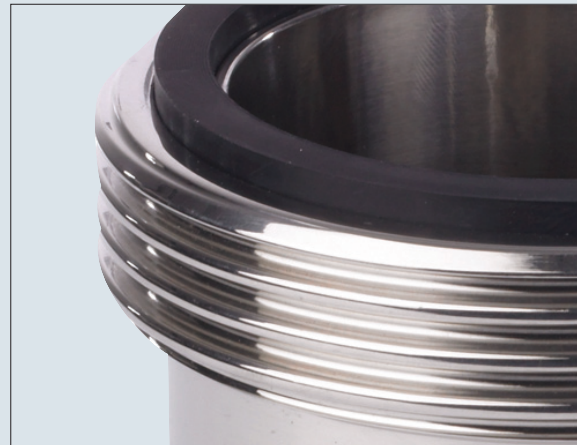
ASSEMBLY

1. RK and RKP safety clamps complying with EN 14420-3 / DIN 2817
2. FLEXOLINE[®] safety clamps
3. HRRK or HRP swage ferrules
4. Welding

THREADS

Food couplings complying with SMS 1145 are not interchangeable with DIN 11851 couplings. Although the threads of both couplings comply with DIN 405/1, precise dimensions vary, making them non-interchangeable.

ND	THREAD COMPLYING WITH DIN 405/1
25	RD 40 x 1/6"
32	RD 48 x 1/6"
38	RD 60 x 1/6"
51	RD 70 x 1/6"
63.5	RD 85 x 1/6"
76	RD 98 x 1/6"
101.6	RD 132 x 1/6"



RA-VALUE

Roughness average value (Ra-value) SMS 1145 couplings

1. Ra-value inner side $\leq 1.6 \mu\text{m}$
2. Ra-value outer side $\leq 3.2 \mu\text{m}$

Other Ra-values and Ra-report available on request.