

EUROPEAN AIR CRIMP COUPLINGS



EA CRIMP COUPLING WITH SERRATED HOSE SHANK

ND	Inch	For hose mm	Material	Weight/pc kg	Reference
13	1/2"	13	Galvanized steel	0.19	EASS013C
19	3/4"	19	Galvanized steel	0.22	EASS019C
25	1"	25	Galvanized steel	0.24	EASS025C



Claw distance: 42mm

Working pressure: 20 bar / 290 psi

Profiled seal DIN 3489-D: Blue EPDM

Assembly: worm drive clamps, air safety clamps and easy crimp ferrule

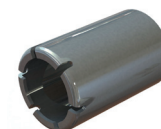
SAFETY CLIP

Material	Weight/pc kg	Reference
Stainless steel AISI 304	0.018	VLBVR2
Galvanised steel	0.018	VLBVS2



EA CRIMP FERRULE

ND	Inch	For hose mm	Material	Reference
13	1/2"	3,5 - 4,7 mm	Steel S235j2H	LHEASS013C
19	3/4"	4,5 - 6 mm	Steel S235j2H	LHEASS019C
25	1"	6 - 7,5 mm	Steel S235j2H	LHEASS025C



SEAL

PROFILED SEAL DIN 3489-D

Material	Colour	OD mm +0,1 / -0,2	ID mm	Height +0,2 / -0,1	Box pieces	Weight/pc kg	Reference
EPDM	BLUE	34,0	20,0	11,0	50	0.006	EAXE





EUROPEAN AIR CRIMP COUPLINGS

EA SAFETY COUPLING CAP

Material	Weight/pc Kg	Reference
Galvanized steel	0.31	EAKS



Claw distance: 42mm
Working pressure: 10 bar / 145 Psi
Profiled seal DIN 3489-D: NBR

EA SAFETY COUPLING - 3 WAY CONNECTION

Material	Weight/pc Kg	Reference
Galvanized steel	0.61	EAYS



Claw distance: 42 mm
Working pressure: 10 bar / 145 Psi
Profiled seal DIN 3489-D: NBR

SAFETY CLIP

Material	Weight/pc Kg	Reference
Stainless steel AISI 304	0.018	VLBVR2
Galvanized steel	0.018	VLBVS2



SEAL

PROFILED SEAL DIN 3489-D

Material	Colour	OD mm +0.1 / -0.2	ID mm	Height +0.2 / -0.1	Box pieces	Weight kg	Reference
EPDM	BLUE	34.0	20.0	11.0	50	0.006	EAXE

